

Specifications for all MicroJets:

Power Requirements: 115 VAC at 60Hz, 230 watts max. Other voltages 220 VAC at 50Hz. A dedicated power supply with an optional power conditioner may be required for optimum performance.

Operation Power: Less than 24 volts.

Operation Variables: Product delay, character width, dot size, real time clock, message selection, box count, time and date change, individual valve setting, print direction, shift code change, expiration date changes, print line selection, pallet count, and omit slash from character zero options.

Character Set: Full ASCII 64 character upper-case set. Up to 39 character messages.

Print Direction: Forward or reverse.

Standard Features:

- Automatic time and date coding
- Disposable ink container
- 2 individual user settable expiration date codes
- Self-contained steel housing
- Automatic pallet count and shift code changes
- Alpha-numeric incrementing
- Heavy duty mounting block and L bracket included for simple mounting to conveyor
- Easy horizontal and vertical adjustments
- Saves print parameters with each message
- Low ink warning light
- User friendly software offers a choice of 7 languages to display instructional menus
- Ink system capacity is one liter disposable ink container
- RS232/RS422 serial port
- 2 year limited warranty on valves
- 1 year limited warranty on unit

Available On:

- All
- LD MicroJet, MicroJet AC
- All
- LD MicroJet, MicroJet AC
- All
- All
- All
- All
- All
- All
- All
- LD MicroJet
- VersaJet LC
- LD MicroJet, VersaJet LC
- LD MicroJet



MicroJet AC unit



MicroJet AC nozzle plate



LD MicroJet unit



LD MicroJet nozzle plate



Loveshaw Jet Printers

Jet Printers

Printing Solutions for the Real World



LOVESHAW
an ITW Company

2206 Easton Turnpike
P.O. Box 83
South Canaan, PA 18459
Tel: (570) 937-4921 Fax: (570) 937-3229
(800) 572-3434

LOVESHAW Europe

A Division of ITW Ltd.

Unit 9 Brunel Gate,
West Portway Industrial Estate
Andover, Hampshire England SP 10 3 SL
Tel: (1264) 357511 Fax: (1264) 355964



LITTLE DAVID



www.loveshaw.com

0.1

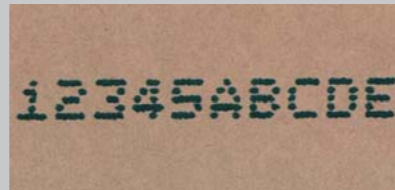
LD MicroJet



- ▣ Better message control
- ▣ Crisp clean print
- ▣ Great for higher speed lines and for smaller boxes
- ▣ Throw distance increased, 250ft/min

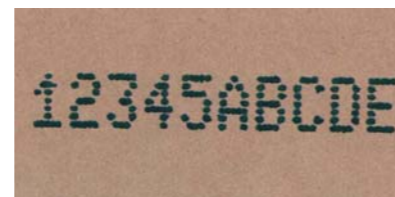
MicroJet I

- ▣ Prints one line of 5 X 5 dot matrix character
- ▣ 11/32" (8.7mm) character height
- ▣ Self-contained non contact coding system
- ▣ High speed valves (5) standard
- ▣ Messages Save Area = 255 (39 fixed characters per line)



MicroJet I Plus

- ▣ Prints one line of 7 X 5 dot matrix character
- ▣ Choose from one of following nozzle plate sizes:
 - 3/8" (9.5mm) - Prints one line of 3/8" character height or 1/2" (12.7mm) - Prints one line of 1/2" character height or 7/8" (22.2mm) - Prints one line of 7/8" character height
- ▣ Self-contained non contact coding system
- ▣ High speed valves (7) standard
- ▣ Messages Save Areas = 255 (39 fixed characters per line)



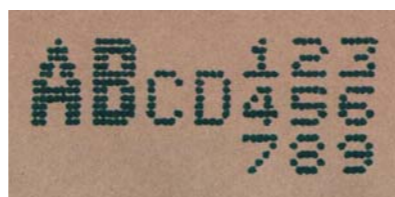
MicroJet II

- ▣ Prints multiple lines and character heights:
 - One or two lines of 5 X 5 dot matrix at 11/32" (8.7mm) character height or
 - One line of 7 X 5 dot matrix at 1/2" (12.7mm) character height or
 - One line of 11 X 7 dot matrix at 13/16" (20.6mm) character height or any combination in a message
- ▣ Self-contained non contact coding system
- ▣ High speed valves (11) standard
- ▣ Messages Save Areas = 149 (39 fixed characters per line)



MicroJet III

- ▣ Prints multiple lines and character heights:
 - One, two or three lines of 5 X 5 dot matrix at 11/32" (8.7mm) character height or
 - One line of 7 X 5 dot matrix at 1/2" (12.7mm) character height or
 - One line of 11 X 7 dot matrix at 13/16" (20.6mm) character height or any combination in a message
- ▣ Self-contained non contact coding system
- ▣ High speed valves (16) standard
- ▣ Messages Save Areas = 100 (39 fixed characters per line)



MicroJet III HC

- ▣ Prints multiple lines and character heights
- ▣ Choose from one of following nozzle plate sizes:
 - 15/16" (23.8mm) - Prints one line of 15/16" character height and/or one or two lines of 7 X 5 dot matrix at 3/8" (9.5mm) character height
 - 1-1/4" (31.8mm) - Prints one line of 1-1/4" character height and/or one or two lines of 7 X 5 dot matrix at 1/2" (12.7mm) character height
 - 2-7/32" (56.4mm) - Prints one line of 2-7/32" character height one or two lines of 7 X 5 dot matrix at 7/8" (22.2mm) character height
- ▣ Self-contained non contact coding system
- ▣ High speed valves (16) standard
- ▣ Messages Save Areas = 149 (39 fixed characters per line)



0.2

MicroJet AC



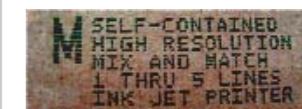
- ▣ Up to 45 messages in one to five line format
- ▣ Refillable integrated ink supply

MicroJet AC offers:

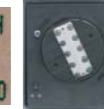
- ▣ A total print height of 1.8" or five lines, single character height of .9" maximum and .25" minimum
- ▣ Self-contained non-contact coding system
- ▣ Rotable print engine closes gap for condensed print
- ▣ Choice of photocell position for product detection
- ▣ External priming bulb

Standard Features for the MicroJet AC:

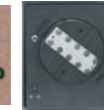
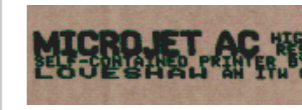
- ▣ Throw distance:
 - 1/2" (12.7mm) at 83 ft/min (25.3m/min)
 - 1/4" (6.4mm) at 150 ft/min (45.7m/min)
- ▣ Prints up to 200 ft/min (61m/min) depending on system set-up conditions
- ▣ Minimum time between print cycles is 1 second
- ▣ Millions of characters from a single bottle of ink
- ▣ Ink system capacity of the unit is 250mls
- ▣ Low ink light indicates a remaining volume of approximately 50mls



90° angle, (vertical)
1.7"(43mm)



24° angle, (off vertical)
1.6"(40.6mm)



65° angle, (off vertical)
.766"(19.5mm)

Ink Usage:

Typical	Characters/500ml
5 line	up to 105,663,500
4 line	up to 91,575,000
3 line	up to 59,723,000
2 line	up to 19,623,000
1 line	up to 5,183,500

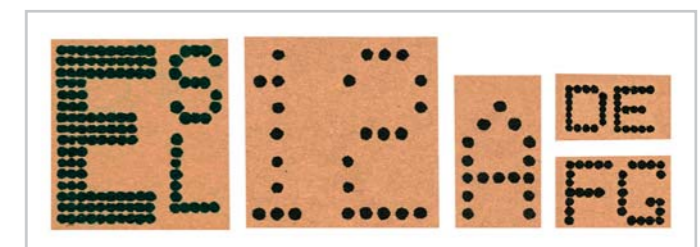
0.3

VersaJet LC

- ▣ Flexible large character ink jet printer
- ▣ Stainless steel for durability

VersaJet LC offers:

- ▣ 1 to 6 printheads
- ▣ Prints up to 6 lines on 1 or 2 sides of a box
- ▣ Print on 1 or 2 production lines with only one controller
- ▣ UL Listed
- ▣ 90 day warranty and a 2 year valve warranty



Specifications for the VersaJet LC:

- ▣ **Power Requirements:** 110 VAC, 60 Hz, 3 Amps max. (switch selectable)
Other voltages 220 VAC, 60 Hz, 1.5 Amps maximum (switch selectable)
- ▣ **Operating Speed:** Up to 100' per minute (30.5 m/min), high speed available
- ▣ **Character Font:** 7 x 5 dot matrix, 7 x 10 dot matrix in bold w/ standard printhead
Optional 16-dot high character printhead
- ▣ **Character Height:** 6 standard sizes: 3/8" (9.5mm), 1/2" (12.7mm), 7/8" (20.6mm), 1-1/4" (31.8mm), 1-1/2" (38.1mm) and 2" (50.8mm)
Optional high character printhead: 15/16" (23.8mm), 1-1/4" (31.8mm), 2-7/32" (56.4mm)
- ▣ **Character Set:** full ASCII 64 character upper case set. Up to 39 characters per line.
- ▣ **Language Options:** English, French, Spanish, Italian, German, Dutch or Portuguese
- ▣ **Print Direction:** forward, reverse or upside down
- ▣ **Memory:** 15k of variable length messages

